

एनएमबि लघुवित्त वित्तीय संस्था लिमिटेड
केन्द्रीय कार्यालय, पोखरा-२५, हेम्जा, कास्की
बोलपत्र फारम



मिति :

श्रीमान् प्रमुख कार्यकारी अधिकृत ज्यु,
 एनएमबि लघुवित्त वित्तीय संस्था लिमिटेड
 केन्द्रीय कार्यालय पोखरा-२५, हेम्जा, कास्की ।

विषय : बोलपत्र फारम पेश गरिएको सम्बन्धमा ।

महाशय,

उपरोक्त सम्बन्धमा त्यस वित्तीय संस्थाबाट मिति २०८०/ / को राष्ट्रिय दैनिकमा केन्द्रीय कार्यालयको निर्माण तथा आन्तरिक सजावट कार्य सम्बन्धी कार्यको लागि सिलबन्दी बोलपत्र पेश गर्ने बारेको सुचना आवाहन गरेकोमा हामी पनि यस बोलपत्रमा सहभागी हुन इच्छुक भई आवश्यक कागजात सहित तोकिएको बोलपत्र फारमको दस्तुर रु.५०००/- र जमानत वापतको बिडवण्ड (धरौटी) रकम वा गुडफर पेमेण्ट चेक जमानत वापतको बोलपत्र मुल्यको ५ प्रतिशत रकम त्यस वित्तीय संस्थाले उपलब्ध गराएको एनएमबि लघुवित्त वित्तीय संस्था लि.केन्द्रीय कार्यालय पोखरा-२५, हेम्जा, कास्कीको नाममा रहेको एनएमबि बैंक लिमिटेड शाखा कार्यालय हेम्जा, कास्कीको खाता नम्बर १२५००९५३४०६०००११ खातामा जम्मा गरी सो को सक्कल भौचर सहित हाम्रो फर्म/कम्पनीको कानुनी कागजातहरु यसै फारमका साथ संलग्न गरी तपसिल बमोजिमको बोलपत्र फारम पेश गरिएको व्यहोरा जानकारी गराउदछौं ।

तपसिल :

- (क) व्यवसाय दर्ताको प्रमाणपत्रको प्रतिलिपि,
- (ख) मुल्य अभिवृद्धि कर दर्ताको प्रतिलिपि,
- (ग) स्थायी लेखा नम्बर (PAN) को प्रमाणपत्रको प्रतिलिपि,
- (घ) कर चुक्ताको प्रमाणपत्रको प्रतिलिपि र
- (ङ) कम्पनीको विवरण (प्राविधिक, आर्थिक, संगठनात्मक क्षमता, अनुभव, मुख्य सम्पर्क व्यक्ति, सम्पर्क नम्बर तथा ठेगाना, जनशक्ति, कार्य गरेको कम्पनीको सिफारिस पत्र)

कार्यालय	ठेगाना	स्पेसिफिकेसन/कार्य विवरण	वर्ग फिट/क्षेत्रफल	अनुमानित कुल लागत (रु) (मु.अ.क.सहित)	BID Bond रकम (रु) (धरौटी)	अनुमानित कार्य सम्पादन गरिसक्नुपर्ने अवधि/समय
केन्द्रीय कार्यालय	पोखरा म.न.पा.-८, न्यूरोड, कास्की ।	नयाँ भवनको आन्तरिक निर्माण तथा सजावट सम्बन्धी सम्पूर्ण कार्य क. आन्तरिक निर्माण, विद्युत र त्यस संग सम्बन्धित कार्य । ख. कम्प्युटर तथा टेलिफोनको नेट बर्किङ्ग र फर्निचर सम्बन्धि/चिअर र सोफा ग. एयर कन्डिसन, फर्निचर र CCTV Layout/security System, Plumbing & sanitary, Civil & Furnishing work.	४५००			

BOQ को आधारमा कुल लागत रकम रु.....(अक्षरेपि) मात्र । पेज नं.१

शर्तहरू :

१. माथि उल्लेखित स्पेसिफिकेसन बमोजिमको मुल्यमा तोकिएको समय सिमा भित्र कार्यालयको आन्तरिक निर्माण तथा सजावट सम्बन्धी कार्य तोकिएको समय सिमा भित्र गर्न राजी छौं । उल्लेखित समय सिमा भित्र कार्य गरी संस्थालाई हस्तान्तरण गर्न नसकेमा जमानत वापतको रकम जफत भएमा हाम्रो मञ्जुरी छ ।
२. देहायको अवस्थामा प्राप्त कुनैपनि बोलपत्र स्वीकृत गरिने छैन :
 - ✓ शिलबन्दी नगरी बोलपत्रदाताले तोकिएको बोलपत्र ढाँचामा आफ्नो आधिकारिक छाप नलगाई पेश गरिएको, हस्ताक्षर नभएको, तोकिएको समयभित्र आवश्यक कागजात संलग्न नगरि पेश भएको, बोलपत्रमा अंकित रकमको ५ प्रतिशत बिडबण्ड रकम पेश नगरिएको,
 - ✓ निर्माण कार्यको BOQ बिल अफ क्वान्टिटीको प्रत्येक आइटमको दररेट (पेज नं.१ देखि २१ सम्म) स्पष्ट रूपमा भरी पेश नगरेको,
 - ✓ बोलपत्रदाताले कार्य सम्पादन गरिसक्ने समय/अवधि अनुसारको कार्यतालिका पेश नगरेको,
 - ✓ बोलपत्र आब्हानको सुचनामा तोकिएका शर्तहरू पूरा नगरी पेश गरिएको ।
३. पेशकी प्रदान प्रक्रिया : पेशकी रकम माग बारेमा परामर्शदाताले सम्पादन भएको कामको मुल्याङ्कन तथा विवरणको आधारमा निम्नबमोजिम अनुसार पेशकी रकम प्रदान गर्न सकिने :
 - ✓ निर्माण कार्य सम्बन्धी सम्झौता गरे पश्चात सस्था जमानत (Advance payment Gaurantee) बैंक ग्यारेन्टीको आधारमा ठेकेदारले अग्रिम पेशकी स्वरूप माग गरेमा कुल ठेक्का रकमको २० प्रतिशत रकम,
 - ✓ मालसामानको धितोमा मालसामान निर्माण स्थलमा पुगेको प्रमाणित भएमा मालसामानको बिलको आधारमा ७५ प्रतिशतमा नवढ्ने गरी र
 - ✓ सिमेन्ट, चुन, बालुवा आदि नाशवान मालसामानको धितोमा ४० प्रतिशत सम्म पेशकी दिन सकिने । तर बैंक ग्यारेन्टी लिई अग्रिम पेशकी प्रदान गरिसकेको अवस्थामा पुन पेशकी नदिईने ।
४. छनौट भएका बोलपत्रदाताले निर्माण सम्झौता गर्नु अघि बोलपत्रको जम्मा लागत रकम (मु.अ.कर सहित) को १० प्रतिशतले हुन आउने परफरमेणस बण्ड वापतको नगद धरौटी जम्मा गरेको सक्कल भौचर वा सो मुल्य बराबरको सम्झौता अवधिभरको परफरमेणस बण्ड पेश गर्नुपर्नेछ ।
५. भुक्तानी प्रक्रिया : परामर्शदाताले सम्पादन भएको कामको मुल्याङ्कन तथा विवरणको आधारमा सम्झौतामा ब्यवस्था भए बमोजिम ।
६. रीत नपुगेका बालपत्र तथा त्यस्ता बोलपत्रका साथ पेश गरिएको बिडबण्ड फिर्ता हुनेछैन ।

भवदीय,

दस्तखत :

नाम :

पद :

फर्म/कम्पनीको नाम :

फर्म/कम्पनीको ठेगाना :

सम्पर्क नं. : (१) (२).....



एनएमबि लघुवित्त वित्तीय संस्था लि.

NMB Laghubitta Bittiya Sanstha Ltd.

नेपाल राष्ट्र बैकबाट 'घ' वर्गको इजाजतपत्र प्राप्त संस्था (५६ जिल्ला कार्यक्षेत्र भएको)
(साविकको विलन भिलेज माइक्रोफाइनान्स वित्तीय संस्था लिमिटेड)

केन्द्रीय कार्यालय, पोखरा-२५, कास्की

BILL OF QUANTITY (BOQ)

Construction of Interior decoration works
HEAD OFFICE: NEW ROAD, POKHARA

BRANDS FOR HEAD OFFICE

S/N	Name of Item	Brand 1	Brand 2	Brand 3	Brand 4
1	Ply and Boards all	Surya	Sagun	Kit	
2	1mm thick Laminates	Century	Green Lame	Delta	
3	Handle	Godrej	Dorma	Hettich	
4	Lock	Godrej	Dorma	Hettich	
5	Chairs	Geeken	Cubic	Ysen	
6	Brick	First Class Brick			
7	Tile	Varmora	Somany	Kajaria	
8	12mm thick gypsum Ceiling	Thai Boral	Elephant	Gyproc	
9	Toughned Glass	ASAHI	Shyamgovin		
10	Paint	Asian	Deluxe	Berger	
14	Skeletan Rack	Podrej	Himal	Godrej	
15	Normal Metal Cabinet	Podrej	Himal	Godrej	
16	Exhaust Fan (At Vault)	Podrej	Himal	Godrej	
17	MCB	Siemens	ABB	Indo Asian	
18	Electrical Copper Wire	Pioneer	Janata	Prakash	NS standard
19	Switches	Clipsal	Northwest	Orange	
20	Socket (Universal Modular)	Clipsal	Northwest	Orange	
21	2X2 light	Wipro	Havells	Brilliant	
22	12 watt light	Wipro	Havells	Brilliant	
23	Wall Fan	Usha	Standard	Cromption	
24	NVR Viewer	Hikvison	Equivalent will not accepted due to head office IT System.		
25	Bullet Camera	Hikvision			
26	Rj45 Socket	Alantek	Dlink	linkbasic	
27	Rj 11 Socket	Alantek	Dlink	linkbasic	
28	Network Wire	Alantek	Molex	Dlink	
29	Telephone Epbax	Panasonic	NEC	Alkatek	
30	9U rack / 24 port patch pannel	Linkbasic	Alantek	Molex	
31	Telephone Set	Panasonic	NEC		
32	AC	Midea	Hyundai	Voltas	
33	Kitchen accessories (Faucet, Sink: 14"x14	Hindware	Parryware	Jaquar	
34	Toilet accessories.	Hindware	Parryware		
35	Polish in wooden Area	French Polish			
36	Blinds	100 mm			
37	All expose wood jungali shishum season	Framing, molding, leaping, skirting, cornices, beading			
38	Fire Extinguishers	NAFFCO	EVERSAFE.		
39	Granite	Zet Black Granite			



एनएमबि लघुवित्त वित्तीय संस्था लि.

NMB Laghubitta Bittiya Sanstha Ltd.

नेपाल राष्ट्र बैकबाट 'घ' वर्गको इजाजतपत्र प्राप्त संस्था (५६ जिल्ला कार्यक्षेत्र भएको)
(साविकको विलन भिलेज माइक्रोफाइनेन्स वित्तीय संस्था लिमिटेड)

केन्द्रीय कार्यालय, पोखरा-२५, कास्की

ने.रा.बै.सं/इ.प्रा./१४/०६९/०९९
कम्पनी दर्ता नं. १३७३/०६८/०६९

www.nmbmicrofinance.com

BILL OF QUANTITY (BOQ)

Summary Sheet

Name of Employer : NMB LAGHUBITTA BITTIYA SANTHA LTD.			
HEAD OFFICE: NEW ROAD, POKHARA			
S/N	Description of Works	Amount	Remarks
1	Furniture work (Bill No: 1)		
2	Chair and sofa (Bill No: 2)		
3	Civil and furnishing work (Bill No: 3)		
4	Electrical and allied work (Bill No: 4)		
5	Security System (Bill No: 5)		
6	Computer Network (Bill No: 6)		
7	Plumbing and sanitary (bill no 7)		
8	Aircondition (AC) work (Bill No: 8)		
	Total Cost		
	Discount%		
	Total cost after discount		
	VAT 13%		
	<u>GRAND TOTAL</u>		

In words::

Bidder's Name
Bidder's Address:
Company Registration Number:
VAT No:
Date of Registration
Annual turnover of last two fiscal Years individually :
<u>Bidder's Authorized Representative/Main Person Information</u>
Name:
Designation:
Address:
Contact Number
WORK EXPERIENCE :3 BANK & 3 BRANCHES:-

We hereby certified that guarantee that the information provided above are correct and meet the criteria's.

Authorized Signature

Company Seal

NMB LAGHUBITTA BITTIYA SANSTHA LTD.

HEAD OFFICE, NEWROAD POKHARA

BILL OF QUANTITY (BOQ)

Bill No.1: Furniture					
S.N	Description of works	Unit	Qty	Rate	Amount
1	Customer Service Desk/Reception Table				
i	Fabrication, Supply and installation of 19mm thick block board Customer service desk including pullout lock able drawer, keyboard tray as per drawing, 16mm thick zed black granite, shisham wooden beading with necessary hardware and accessories as per requirement, design, drawing, detail, specification, size and instruction of engineer, all complete. CSD (Size:12'x2'-6"x2'-6"ht)	Rnf	12.00		
ii	Fabrication, Supply and installation of side Unit Printer table made up of 19mm thick Laminated with 1mm thick formica, Granite (color approved by bank) top as per corporate office design and finishing, with natural matt finish polish all complete. (Size: 3'-6"x1'-6"x30")	Set	-		
iii	Fabrication, Supply and installation of Filing cabinet made in 19mm thick Plywood in site partition in file size as per required, 1mm thick approved color laminated on exposed surface & approved shade, lock able shutter (glaze/ solid), decorative wooden bead with natural matt finish polish all complete as per design. (Size: 12' x 3' ht. x 1'4")	Sq.ft.	36.00		
2	C.E.O. Table				
i	Fabrication, supply and installation of C.E.O Table with cpu tray, key board tray and drawers, made up of 19mm block board, 1mm thick Formica and shisham wooden beading with necessary hardware and accessories as per requirement, design, drawing, detail, specification, size and instruction of engineer, all complete (Size: 6-0"x2'-6"x2'-6")	set	1.00		
ii	Fabrication, Supply and installation of Side table , the table 19mm thick Laminated with 1mm thick formica, CPU unit space side drawer, Filing space, key board tray with natural matt finish polish all complete. (Size: 3'-6"x1'-6"x30" ht)	set	1.00		
iii	Fabrication, Supply and installation of Filing cabinet made in 19mm thick Plywood in site partition in file size as per required, 1mm thick approved color laminated on exposed surface & approved shade, lock able shutter (glaze/ solid), decorative wooden bead with natural matt finish polish all complete as per design.	Sq.ft.	-		
3	D.C.E.O. Table				
i	Fabrication, supply and installation of D.C.E.O Table with cpu tray, key board tray and drawers, made up of 19mm block board , 1mm thick Formica and shisham wooden beading with necessary hardware and accessories as per requirement, design, drawing, detail, specification, size and instruction of engineer, all complete (Size: 6-0"x2'-6"x2'-6")	set	1.00		
ii	Fabrication, Supply and installation of Side table , the table 19mm thick Laminated with 1mm thick formica, CPU unit space side drawer, Filing space, key board tray with natural matt finish polish all complete.	set	1.00		
iii	Fabrication, Supply and installation of Filing cabinet made in 19mm thick Plywood in site partition in file size as per required, 1mm thick approved color laminated on exposed surface & approved shade, lock able shutter (glaze/ solid), decorative wooden bead with natural matt finish polish all complete as per design.	Sq.ft.	-		
4	Meeting Table				
i	Fabrication, supply and installation of Meeting Tables made up of 19mm block board , 1mm thick Formica and shisham wooden beading with necessary hardware and accessories as per requirement, design, drawing, detail, specification, size and instruction of engineer, all complete (Table Size:12'-0"x4'0"x30"ht)	sqft	48.00		

Bill No.1: Furniture					
S.N	Description of works	Unit	Qty	Rate	Amount
ii	Fabrication, Supply and installation of Filing cabinet made in 19mm thick Plywood in site partition in file size as per required, 1mm thick approved color laminated on exposed surface & approved shade, lock able shutter (glaze/ solid), decorative wooden bead with natural matt finish polish all complete as per design	Sq.ft.	110.00		
iii.	Super interactive (UHD)4K smart Board (75 inch) inbuilt web camera and microphone. White board pen, wall mount, bracket, Free Tech Support and Training	Set	1.00		
5	Account and Finance Department Head Table (4'-6"x2'x30")				
i	Fabrication, supply and installation of Tables with cpu tray, key board tray and drawers, made up of 19mm block board, 1mm thick Formica and shisham wooden beading with necessary hardware and accessories as per requirement, design, drawing, detail, specification, size and instruction of engineer, all complete.	Set	1.00		
ii	Fabrication, Supply and installation of Side table , the table 19mm thick Laminated with 1mm thick formica, CPU unit space side drawer, Filing space, key board tray with natural matt finish polish all complete. (Size: 3-6"x1'-6"x30")	Set	1.00		
iii	Fabrication, supply and installation of Filing cabinet made in 19mm thick. Plywood in site partition in file size as pre required, laminated on exposed surface & approved shade, lock able shutter (glaze/ solid), decorative wooden bead with natural matt finish polish all complete as per drawing and instruction of Consultant.	sq ft	28.50		
6	Branch Operation & GSD Head Table (4'-6"x2'x30")				
i	Fabrication, supply and installation of Tables with cpu tray, key board tray and drawers, made up of 19mm block board, 1mm thick Formica and shisham wooden beading with necessary hardware and accessories as per requirement, design, drawing, detail, specification, size and instruction of engineer, all complete.	Set	1.00		
ii	Fabrication, Supply and installation of Side table , the table 19mm thick Laminated with 1mm thick formica, CPU unit space side drawer, Filing space, key board tray with natural matt finish polish all complete. (Size: 3-6"x1'-6"x30")	Set	1.00		
iii	Fabrication, supply and installation of Filing cabinet made in 19mm thick Plywood in site partition in file size as pre required, laminated on exposed surface & approved shade, lock able shutter (glaze/ solid), decorative wooden bead with natural matt finish polish all complete as per drawing and instruction of Consultant.	sq ft	22.50		
7	Recovery Department Head Table (4'-6"x2'x30")				
i	Fabrication, supply and installation of Tables with cpu tray, key board tray and drawers, made up of 19mm block board, 1mm thick Formica and shisham wooden beading with necessary hardware and accessories as per requirement, design, drawing, detail, specification, size and instruction of engineer, all complete.	Set	1.00		
ii	Fabrication, Supply and installation of Side table , the table 19mm thick Laminated with 1mm thick formica, CPU unit space side drawer, Filing space, key board tray with natural matt finish polish all complete. (Size: 3-6"x1'-6"x30")	Set	1.00		
iii	Fabrication, supply and installation of Filing cabinet made in 19mm thick Plywood in site partition in file size as pre-required, laminated on exposed surface & approved shade, lock able shutter (glaze/ solid), decorative wooden bead with natural matt finish polish all complete as per drawing and instruction of Consultant.	sq ft	25.75		
8	Credit/Deposit Department Head Table (4'-6"x2'x30")				

Bill No.1: Furniture					
S.N	Description of works	Unit	Qty	Rate	Amount
i	Fabrication, supply and installation of Tables with cpu tray, key board tray and drawers, made up of 19mm block board, 1mm thick Formica and shisham wooden beading with necessary hardware and accessories as per requirement, design, drawing, detail, specification, size and instruction of engineer, all complete.	Set	1.00		
ii	Fabrication, Supply and installation of Side table , the table 19mm thick Laminated with 1mm thick formica, CPU unit space side drawer, Filing space, key board tray with natural matt finish polish all complete. (Size: 3-6"x1'-6"x30")	Set	1.00		
iii	Fabrication, supply and installation of Filing cabinet made in 19mm thick. Plywood in site partition in file size as pre required, laminted on exposed surface & approved shade, lock able shutter (glaze/ solid), decorative wooden bead with natural matt finish polish all complete as per drawing and instruction of Consultant.	sq ft	-		
9	Central Monitoring Unit Department Head Table (4'-6"x2'x30")				
i	Fabrication, supply and installation of Tables with cpu tray, key board tray and drawers, made up of 19mm block board, 1mm thick Formica and shisham wooden beading with necessary hardware and accessories as per requirement, design, drawing, detail, specification, size and instruction of engineer, all complete.	Set	1.00		
ii	Fabrication, Supply and installation of Side table , the table 19mm thick Laminated with 1mm thick formica, CPU unit space side drawer, Filing space, key board tray with natural matt finish polish all complete. (Size: 3-6"x1'-6"x30")	Set	1.00		
iii	Fabrication, supply and installation of Filing cabinet made in 19mm thick. Plywood in site partition in file size as pre required, laminted on exposed surface & approved shade, lock able shutter (glaze/ solid), decorative wooden bead with natural matt finish polish all complete as per drawing and instruction of Consultant.	sq ft	21.00		
10	RH/LH/DH/FH/GSD Working Table				
i	Fabrication, supply and installation of Working Tables with cpu tray, key board tray and drawers, made up of 19mm block board, 1mm thick Formica and shisham wooden beading with necessary hardware and accessories as per requirement, design, drawing, detail, specification, size and instruction of engineer, all complete	sqft	200.00		
ii	Fabrication, supply and installation of Filing cabinet made in 19mm thick. Plywood in site partition in file size as pre required, laminted on exposed surface & approved shade, lock able shutter (glaze/ solid), decorative wooden bead with natural matt finish polish all complete as per drawing and instruction of Consultant.	sq ft	19.50		
11	Encloser room Table (5'x2'x30") CCO,CBO,&CRO				
i	Fabrication, supply and installation of Tables with cpu tray, key board tray and drawers, made up of 19mm block board, 1mm thick Formica and shisham wooden beading with necessary hardware and accessories as per requirement, design, drawing, detail, specification, size and instruction of engineer, all complete.	Set	3.00		
ii	Fabrication, Supply and installation of Side table , the table 19mm thick Laminated with 1mm thick formica, CPU unit space side drawer, Filing space, key board tray with natural matt finish polish all complete. (Size: 3-6"x1'-6"x30")	Set	3.00		
iii	Fabrication, supply and installation of Filing cabinet made in 19mm thick. Plywood in site partition in file size as pre required, laminted on exposed surface & approved shade, lock able shutter (glaze/ solid), decorative wooden bead with natural matt finish polish all complete as per drawing and instruction of Consultant.	sq ft	69.00		
12	IT Operation Department Head Table (4'-6"x2'x30")				

Bill No.1: Furniture					
S.N	Description of works	Unit	Qty	Rate	Amount
i	Fabrication, supply and installation of Tables with cpu tray, key board tray and drawers, made up of 19mm block board, 1mm thick Formica and shisham wooden beading with necessary hardware and accessories as per requirement, design, drawing, detail, specification, size and instruction of engineer, all complete.	Set	1.00		
ii	Fabrication, Supply and installation of Side table , the table 19mm thick Laminated with 1mm thick formica, CPU unit space side drawer, Filing space, key board tray with natural matt finish polish all complete. (Size: 3-6"x1'-6"x30")	Set	1.00		
iii	Fabrication, supply and installation of Filing cabinet made in 19mm thick. Plywood in site partition in file size as pre required, laminted on exposed surface & approved shade, lock able shutter (glaze/ solid), decorative wooden bead with natural matt finish polish all complete as per drawing and instruction of Consultant.	sq ft	19.50		
13	IT Working Table				
i	Fabrication, supply and installation of Working Tables with cpu tray, key board tray and drawers, made up of 19mm block board , 1mm thick Formica and shisham wooden beading with necessary hardware and accessories as per requirement, design, drawing, detail, specification, size and instruction of engineer, all complete.	sqft	47.50		
ii	Fabrication, supply and installation of Filing cabinet made in 19mm thick Plywood in site partition in file size as pre required, laminted on exposed surface & approved shade, lock able shutter (glaze/ solid), decorative wooden bead with natural matt finish polish all complete as per drawing and instruction of Consultant.	sq ft	-		
14	Audit Department Head Table (4'-6"x2'x30")				
i	Fabrication, supply and installation of Tables with cpu tray, key board tray and drawers, made up of 19mm block board, 1mm thick Formica and shisham wooden beading with necessary hardware and accessories as per requirement, design, drawing, detail, specification, size and instruction of engineer, all complete.	Set	1.00		
ii	Fabrication, Supply and installation of Side table , the table 19mm thick Laminated with 1mm thick formica, CPU unit space side drawer, Filing space, key board tray with natural matt finish polish all complete. (Size: 3-6"x1'-6"x30")	Set	1.00		
iii	Fabrication, supply and installation of Filing cabinet made in 19mm thick. Plywood in site partition in file size as pre required, laminted on exposed surface & approved shade, lock able shutter (glaze/ solid), decorative wooden bead with natural matt finish polish all complete as per drawing and instruction of Consultant.	sq ft	18.00		
15	Audit Department Working Table				
i	Fabrication, supply and installation of Working Tables with cpu tray, key board tray and drawers, made up of 19mm block board, 1mm thick Formica and shisham wooden beading with necessary hardware and accessories as per requirement, design, drawing, detail, specification, size and instruction of engineer, all complete.	sqft	60.00		
ii	Fabrication, supply and installation of Filing cabinet made in 19mm thick. Plywood in site partition in file size as pre required, laminted on exposed surface & approved shade, lock able shutter (glaze/ solid), decorative wooden bead with natural matt finish polish all complete as per drawing and instruction of Consultant.	sq ft	-		
16	HR,Legal,&compliance Department Head Table (4'-6"x2'x30")				
i	Fabrication, supply and installation of Tables with cpu tray, key board tray and drawers, made up of 19mm block board, 1mm thick Formica and shisham wooden beading with necessary hardware and accessories as per requirement, design, drawing, detail, specification, size and instruction of engineer, all complete.	Set	1.00		

Bill No.1: Furniture					
S.N	Description of works	Unit	Qty	Rate	Amount
ii	Fabrication, Supply and installation of Side table , the table 19mm thick Laminated with 1mm thick formica, CPU unit space side drawer, Filing space, key board tray with natural matt finish polish all complete. (Size: 3-6"x1'-6"x30")	Set	1.00		
iii	Fabrication, supply and installation of Filing cabinet made in 19mm thick. Plywood in site partition in file size as pre required, laminted on exposed surface & approved shade, lock able shutter (glaze/ solid), decorative wooden bead with natural matt finish polish all complete as per drawing and instruction of Consultant.	sq ft	52.00		
17	HR Working Table				
i	Fabrication, supply and installation of Working Tables with cpu tray, key board tray and drawers, made up of 19mm block board , 1mm thick Formica and shisham wooden beading with necessary hardware and accessories as per requirement, design, drawing, detail, specification, size and instruction of engineer, all complete	sqft	50.00		
ii	Fabrication, supply and installation of Filing cabinet made in 19mm thick Plywood in site partition in file size as pre required, laminted on exposed surface & approved shade, lock able shutter (glaze/ solid), decorative wooden bead with natural matt finish polish all complete as per drawing and instruction of Consultant.	sq ft	93.00		
18	Helmet Rack				
	Fabrication, supply and installation of Helmet Rack , made up of 19mm block board 1mm thick Formica and shisham wooden beading with necessary hardware and accessories as per requirement, design, drawing, detail, specification, size and instruction of engineer, all complete	set	1.00		
19	Center Table				
	Fabrication, supply and installation of Center Table , made up of 19mm block board of 1mm thick Formica and shisham wooden beading with necessary hardware and accessories as per requirement, design, drawing, detail, specification, size and instruction of engineer, all complete (Size:3'-0" X 1'-9"X1'-6"ht)	set	5.00		
20	Kitchen rack				
	Fabrication, supply and installation of Kitchen rack made up of 18mm waterproof ply ,drawers laminated with formica , should be placed below the slab of kithcen including drawers, magnets, stainless steel handle etc finishing all complete.	Sq.ft.	25.00		
21	Notice board/ pinup board				
	Providing and fixing in position soft board fabric panels (approx. Size of each panel 1'-6" H x varying length in partition) comprising 50mm x 20mm frame all round 6mm thick commercial ply encased in 8mm thick u foam made and upholstered to desired shape with fabric, all complete as per drawing, specification/schedule of finishes and direction of consultant	sft	12.00		
22	Key hanger				
	Fabrication, supply and installation of key hanger made up with soft board, salwood/shisamwood beading 1mm thick laminet on the exposed surface , SS hanger hook all complet work as per requirement, design, drawing, detail, specification, size and instruction of engineer.	set	1.00		
23	Decorative Wall with Corporate logo				
	Cladding of wall with 12mm thick ply and laminated with 1mm thick formica including 10mm glass with corporate logo sticker at glass at the back of CSD/Board room & C.E.O room as per design	Sq.ft.	260.00		
24	Suggetion box				
	Fabrication and supply of suggetion box made up with soft board, salwood/shisamwood beading 1mm thick laminet on the exposed surface , SS hanger hook all complet work as per requirement, design, drawing, detail, specification, size and instruction of engineer.	set	1.00		
Total					

NMB LAGHUBITTA BITTIYA SANSTHA LTD.
HEAD OFFICE, NEWROAD POKHARA
BILL OF QUANTITY (BOQ)

Bill No.2: CHAIR AND SOFA					
S.N	Description of works	Unit	Qty	Rate	Amount
1.00	Executive Chairs for C.E.O & D.C.E.O	Nos.	2		
	Thick Padded Contoured Mesh Fabric Seat and Mesh Back with Lumbar Support. Pneumatic Seat Height Adjustment. Height Adjustable Lower Lumbar Support. Tension Adjustable Lumbar Support. Locking Tilt Control Mechanism. Tension Control. Headrest. Height Adjustable Arms with Padded Armrests. Heavy Duty Nylon Base with Dual Wheel Casters. <input type="checkbox"/> Stainless steel Chrome Base/Nylon with adjustable hydraulic. <input type="checkbox"/> Fine hard plastic on armrest with adjustable system. <input type="checkbox"/> Black Fabric on seat. <input type="checkbox"/> Black PU on seat. <input type="checkbox"/> High quality black net finished on back <input type="checkbox"/> Size approximately: Chair Height:101-108.5cm, Seat H: 48-56cm, SW: 48cm, SD:47cm				
2.00	Executive Chairs for Manager level staff	Nos.	11		
	Thick Padded Contoured Mesh Fabric Seat and Mesh Back with Lumbar Support. Pneumatic Seat Height Adjustment. Height Adjustable Lower Lumbar Support. Tension Adjustable Lumbar Support. Locking Tilt Control Mechanism. Tension Control. Headrest. Height Adjustable Arms with Padded Armrests. Heavy Duty Nylon Base with Dual Wheel Casters. <input type="checkbox"/> Stainless steel Chrome Base/Nylon with adjustable hydraulic. <input type="checkbox"/> Fine hard plastic on armrest with adjustable system. <input type="checkbox"/> Black Fabric on seat. <input type="checkbox"/> Black PU on seat. <input type="checkbox"/> High quality black net finished on back <input type="checkbox"/> Size approximately: Chair Height:101-108.5cm, Seat H: 48-56cm, SW: 48cm, SD:47cm				
3.00	Staff Chairs	Nos.	42		
	Provide Staff Chairs: revolving, adjustable height, Black PU cover with internal foam, stainless steel legs, all complete as approved and specification/schedule of finishes and direction of Consultant. <input type="checkbox"/> Stainless steel Chrome/Nylon Base. <input type="checkbox"/> High quality black net/mesh finished on back <input type="checkbox"/> Black PU on seat. <input type="checkbox"/> Fine hard plastic on armrest. <input type="checkbox"/> Stainless steel Chrome Base/Nylon with adjustable hydraulic. <input type="checkbox"/> Size approximately: Chair H 86.5cm, Seat H: 46cm, Seat D: 49.5cm, Seat W.: 46cm				
4.00	Visitor Chairs	Nos.	21		
	Provide Visitor Chairs: fixed height, Black PU cover with internal foam, stainless steel legs, high quality nylon net back all complete as approved and specification/schedule of finishes and direction of consultant. <input type="checkbox"/> Stainless steel Chrome <input type="checkbox"/> High quality black net/mesh finished on back <input type="checkbox"/> Black PU on seat. <input type="checkbox"/> Fine hard plastic on armrest. <input type="checkbox"/> Stainless steel Chrome Base/Nylon w <input type="checkbox"/> Size approximately: Chair H 86.5cm, Seat H: 46cm, Seat D: 49.5cm, Seat W.: 46cm				
5.00	Sofa				
	Providing sofa using fabric with high density u-foam for the back and seat with necessary wooden frame work supported on 3" designed wooden members finished in three coats of melamine, all accessories all complete as per drawing, specification/schedule of finishes and direction of consultant				
	2 seater	Nos.	1		
	3 seater	Nos.	3		
	4 seater	Nos.	3		
6.00	Waiting Chairs				
	Provide Waiting sofa for waiting: fixed, custom designed , artificial leather, stainless steel legs, cover -as approved, drawing, specification/schedule of finishes and direction of consultant				
	3 Seaters	Nos.	0		
	TOTAL				

NMB LAGHUBITTA BITTIYA SANSTHA LTD.

HEAD OFFICE, NEWROAD POKHARA

BILL OF QUANTITY (BOQ)

Bill No.3: Civil and Furnishing work		Estimated Cost				
S.N	Description of works	Unit	Qty	Rate	Amount	Remarks
1.00	Dismantling work					
i	Dismantling Brick wall, partitions, slabs , floors required for new construction, using cutter on both sides of wall for minimum disturbances to structure retaining its service like sewer, drainage, electricity etc. including collection transportation and disposal of dismantled debris off sites, Blockage of the old electric hole by blank plate, as per drawing, specification and instruction of engineer.	job	1			
2.00	RCC /PCC/PUNNING Work					
i	RCC works in 1:2:4 (cement: sand: agg)with 10mm & 8mm reinforcement bar 4" thick slab at kitchen slab including Formwork, centering, shuttering with 12mm thick ply wood for all kinds of concrete work, including necessary props, all complete as per drawing and instructions.	sqft	-			Rate only
ii	CEMENT SCREEDING Supply and fixing of 75 mm screeding wherever required. all complete as per drawing, specification and instruction of the consultant. The cost must include a brick soiling in Restroom area also.	Sq.ft.	-			Rate only
iii	CEMENT PUNNING Supply and fixing of 10 mm thick cement punning wherever required. all complete as per drawing, specification and instruction of the consultant.	Sq.ft.	-			Rate only
3.00	Masonry Works					
	Supply and laying of Brick masonry wall with first class chimney made brick, cement sand mortar (1:4) including scaffolding, curing, filling, cleaning and racking out mortar joints, recesses, making lintels where ever required including materials, labor, lead and lift, all complete as per design, drawing, detail, size, specification and instruction of engineer.(# note :cement brand shall be Trishakti, Shivam, Jagadamba or equivalent)					
i	4" Brick Wall	Sq.ft.	-			Rate only
ii	9" Brick Wall	Sq.ft.	-			Rate only
4.00	Cement Plaster Work					
	Plastering all required inner surface wall and ceiling with 1/2" thick. of 1:4 mortar in perfect size, shape, line and level, including cleaning, chipping, cutting and curing, all complete as per design and drawings.	Sq.ft.	-			Rate only
5.00	Flooring work					
i	Floor Tiles: Providing & laying (24" x 24") glazed vitrified plain ivory ceramic floor tiles of approved quality and color over and including (1:2) cement (20 mm height screening) sand mortar on floors in perfect line and level finished with necessary pointing with white cement in joints , including 3mm chipping of the surface all complete as per design and drawings and approval of the Consultant:	Sq.ft.	2,900			
ii	Tile Skirting of 4"	Rnf	600			
iii	Providing and laying of 10mm thick parquet flooring of approved quality and colour over 3mm PU foam in perfect line and level all complete.	Sq.ft.	700			
iv	Wooden skirting profile at parquet flooring area	Rnf	190			
6.00	Gypsum False Ceiling					
i	Providing and fixing suspended Boral, Elephant (or equivalent) gypsum board false ceiling with thickness not less than 12mm with exterior surfaced duly taped at all joints, leveled with gypsum putty, with surface prepared with POP through entire area, branded suspension hangers in standard gap, all complete as per design, drawing, detail, size, specification and instruction of engineer.	Sq.ft.	5,500			
7.00	Vertical Blinds					
	Supply and installation of 100 mm vertical blinds with dust proof and stain-resistance fabric of approved quality and colour , all complete as per drawing, specification and instructions. Note: use wherever applicable for windows & partation only .	Sq.ft.	630			

Bill No.3: Civil and Furnishing work		Estimated Cost				
S.N	Description of works	Unit	Qty	Rate	Amount	Remarks
8.00	Aluminum partition and door					
i	Fabrication, supply and installation bronze colored (frame size: 38mmx78mmx1.3mm) aluminum Glass partition (5 mm thick clear signing glass , black/white frosted Sunfilm, 8mm wooden coloured Nepal Board or ply laminated with wooden formica, , and fixing accessories, guide, neoprene, Clear gasket, screw, silicon seal etc.) as per site condition.	Sq.ft.				Rate only
ii	Fabrication, supply and installation bronze colored Frame Door (frame size: 78mmx78mmx1.3mm) aluminum (5 mm thick clear glass, black/white frosted Sunfilm10mm Nepal Board/ ACP Board lock and fixing accessories, guide, neoprene, gasket, screw, silicon seal, Door closure, door stopper etc.) as per site condition	Sq.ft.				Rate only
iii	Provide and install 12mm toughened frameless glass door with floor spring/handles/patch fittings/door closure/stopper/lock and other hardwares as necessary.	Sq.ft.	36			
iii	Fabrication, Supply and installation of aluminum sliding window with natural color anodized aluminium section of 63x38mm framing tube, 100mm door series, 5mm clear glass ,frosted sticker and other required hardware and accessories ,all complete as per design, drawing, detail, size, specification and instruction of engineer.	Sq.ft.	-			Rate only
9.00	Wooden Partition					
i	Supply and fixing of 19mm ply wooden partition with 2'-0" c/c apart bothways horizontally and vertically. The partition shall consist of 8mm thick approved commercial ply. It shall be finished with 1mm thick approved Laminates on both sides to be applied with with fevicol adhesive with 1 mm thick groove finished with polish/paint of approved shade and colour. The cost must include the 5mm glass design with frosted stickers in between partition & Skirting required for partition all complete as per drawing, specification/schedule of finishes and direction of Consultant. The length of the partitions shall be verified at site.,Wooden Seasoned Sisau Skirting , polishing and necessary works as per drawing and instructions:	Sq.ft.	2,800			
ii	Fabrication, Supply and installation of wooden cladding work for pillar and other exposed part wherever required with 12mm thick surya/sagun ply board on the framing of 1.5x2 sal/shishau wooden framing and other required accessories, all complete as per design, drawing, detail, size, specification and instruction of engineer.	Sq.ft	350			
10.00	Flush door					
i	Provide and install solid flushed or glazed door shutter made out of 30mm thick solid core homogeneous board to match partition and finished with approved 1mm thick approved Laminates, including with approved cost of holdfast, screws, high quality handle and locks, door closer, stopper etc. The doors shall have 5mm glass openings, where indicated,as per drawing, specification/schedule of finishes and direction of Consultant.	Sq.ft.	300			
11.00	Putty and Paint work					
i	Putty work					
	Painting on wall with wall putty of approved quality (Must be ISO 9001 : 2000 certified company) of approved color and shade over one coat of primer to give uniform coloring and quality floss finish after properly sanding the surface, all complete as per specification and instruction of the consultant. MAKE: Wall Putty: JK/ Birla Paint	Sq.ft.	9,500			
ii	Emulsion Painting work (Interior and Exterior Emulsion)					
	Painting on wall and ceiling with two coats of Emulsion Paints of approved quality (Must be ISO 9001 : 2000 certified company) of approved color and shade over one coat of primer to give uniform coloring and quality floss finish after properly sanding the surface, all complete as per specification and instruction of the consultant. MAKE: Wall Putty: JK/ Birla	Sq.ft.	9,500			
iii	Enameled Paint work					

Bill No.3: Civil and Furnishing work		Estimated Cost				
S.N	Description of works	Unit	Qty	Rate	Amount	Remarks
	Painting on rolling shutter, Collapsible gate, window frame & Metal works with two coats of enamel Paints of approved quality (Must be ISO 9001 : 2000 certified company) of approved color and shade over one coat of primer to give uniform coloring and quality floss finish after properly sanding the surface, all complete as per specification and instruction of the consultant.	Sq.ft.	1,500			
12.00	Metal Work					
iii	Supply and fixing of metal battery stand of size (4'0"x1'9"x4'0") for battery with metal primer All complete.	Set	1			
Total						

NMB LAGHUBITTA BITTIYA SANSTHA LTD.

HEAD OFFICE, NEWROAD POKHARA

BILL OF QUANTITY (BOQ)

Bill No.4: Electrical and Allied work					
S.N	Description of works	Unit	Qty	Rate	Amount
1.00	Main Panel board				
	Supply and Installation of 3 Phase Main Distribution Board with Copper Bus Bar and neutral and earth link concealed type made of 16 SWG gauge mild steel sheet double cover covering, dust and vermin proof with fixing, connecting and testing all complete. Design, Fabrication, Supply, Delivery, Installation, Testing and Commissioning of the following:				
i	160A TP MCCB-1(incoming) 80A TP MCCB-1(Outgoing to light and power DB) 63A TP MCCB-1(Outgoing to AC DB) 63A TPN MCB-4(Outgoing to Floor DB) 16A SP MCB-2 (Outgoing to G.F)	Set	1.00		
2.00	FLOOR DISTRIBUTION BOARD - Section-1				
	Incomer : 1 no of 40A TPN MCCB(35KA BC) OUTGOINGS: 1 no of 25A TP MCCB (35kA BC) 2 nos of 20 A DP MCB(15 KA BC) 9 nos of 16 A SP MCB for power 9 nos of 6 A SP MCB for light SECTION -2 AC SECTION INCOMER: 1 no of 25A TP MCCB (35kA BC) OUTGOINGS: 1 no of 20A TP MCB (25kA BC) 2 no of 25A TP MCB 3 no of 25A DP MCB (25kA BC) 3 no of 25A DP MCB (space only) 2 set of 100A TPN copper bus bar 2 no of earth bus bar RYB indicator lamp with fuse 1 set. 0-500V Voltmeter with selector switch 1 set. 0-200A Ammeter with selector switch 1 set. of 40/5A ring type CT coil <i>Cable glands for incoming and outgoing cables</i>	Set	1.00		
3.00	UPS-Power-Panel (at UPS-Room) with followings				
	32 Amp DP MCB-1 (Incoming) Outgoing: 1 no of 16A DP MCB(10kA BC) 2 no of 16A DP MCB (space only) 12 no of 16A SP MCB(10kA BC) 2 no of 16A SP MCB (space only) 6 no of 6A SP MCB (10kA BC) 2 no of 6A SP MCB (space only)	Set	1.00		
4.00	Lighting Arrester	Set	-		

Bill No.4: Electrical and Allied work					
S.N	Description of works	Unit	Qty	Rate	Amount
	Supply, delivery, installation, testing and commissioning of Lighting arrester including the necessary connecting, fixing and insulating materials all complete as per drawing, specification and instructions. Followings shall be included:				
	1. Providing and installation of Copper rod lighting arrester, with triple spikes with 1 meter 16mm pure copper rode mounting base earthing connection terminal set and required standing insulated metal frame = 1set 2. Providing and installation of 20mmx3mm pure copper strip and insulated strip saddle (@2feet) from Earthing terminal (welded) and civil job = 25 to 35 M 3. Earthing set for lighting arrester = 1set				
5.00	LT FEEDER CABLES / WIRES				
i	Supply and laying of 25.mm Copper armod Cable Main Meter to Main DB with connection and testing all complete works.	Rmtr.	60		
ii	Supply and laying of 6MM Copper armod Cable for Main DB to Server UPS INPUT DB with connection and testing all complete works.	Rmtr.	60		
6	ALRAM, LIGHT AND FAN POINTS WIRING				
	Supply, delivery, conduit laying with wiring of following light , fan and power points with 440/660 V grade copper wire and through 16 /20mm medium pressure HDP pipes (concealed) PVC ducts (Exposed area) in walls, ceilings and floors including 18 SWG GI sheet metal box with required civil works as per the site condition, drawings, specifications, electricity rules and instructions all complete.(Type: Nepal / Pioneer cable or equivalent)				
I	Light points with 2x3/22 SWG PVC insulated copper wire 3"x3" with metal box.	Pts.	100		
II	Fan points with 2x3/22 SWG PVC insulated copper wire 3"x3" with metal box.	Pts.	25		
iii	Saftey device points with 2x3/22 SWG PVC insulated with copper wire as per instruction	Pts.	35.00		
5	POWER POINT WIRING				
A	Supply, delivery and wiring of City power points with 2 x 7/22 +1 x1/18 SWG PVC insulated 650/1100 V grade copper wire through 20/25 mm high quality HDP pipes concealed in walls, ceiling and floors including 18 SWG GI sheet metal box, junction box, pipe kila	Pts.	65		
B	Supply, delivery and wiring of UPS power points from UPS to verious points with 2 x 3/20 +1 x1/18 SWG PVC insulated 650/1100 V grade copper wire through 20/25 mm high quality HDP pipes concealed in walls, ceiling and floors including 18 SWG GI sheet.	Pts.	130		
C	Threee phase/Single phase A/C point wiring by 7/20 x2+ 3/22x1copper wire from DB to A/C unit	Pts.	10		
6	SWITCHES / SOCKETS				

Bill No.4: Electrical and Allied work					
S.N	Description of works	Unit	Qty	Rate	Amount
	Supply, delivery, installation, testing and commissioning of the following modular type switches, sockets and plugs with all required accessories including necessary connecting, fixing, insulating and jointing materials and redoing the chiseled areas with (<i>Make:- Roma/Clipsal/Orange</i>)				
A	Single gang one way switch with plate	Nos.	16		
B	Two gang one way switch with plate				
C	Three gang one way switch with plate				
D	Four gang one way switch with plate				
E	Five gang one way switch with plate				
F	Six gang one way switch with plate				
G	16A switched Universal socket	Nos.	65		
H	13A switched Universal socket	Nos.	155		
I	20A 1 gang DP Switch for AC	Nos.	10		
7.00	Supply, delivery, installation, testing and commissioning of the following light fixtures with holders, chokes, ballast's, lamps, starters, dimmers, tube lights, lamps, transformers, control gears and accessories (wherever applicable) including the necessary connection, fixing and insulating materials as per the drawings, site conditions, specifications and instructions all complete. (Type: wipro/Heavls or equivalent)				
i	1x12 w LED recessed/surface type down light (Wipro/ Havells/ Lipper)	set	100		
ii	24"x24" 36 w LED surface/recessed light fixture (/ Wipro/ Havells/ Lipper)	set	0		
8.00	Wall fan/Exhaust fan				
	Supply, delivery, installation, testing and commissioning of the following ,wall, and exhaust fans including fixing clamps & necessary connecting fixing & insulating materials & accessories as per drawing specifications, electricity rules, site conditions & instructions all complete. (<i>Usha/Standard</i>)				
A	Supply, delivery, and connection of Exhaust fan 9" with iron frame	Nos.	1		
B	Supply, delivery, and connection of wall fan	Nos.	10		
9.00	PLATE EARTHING				
i	Heavy Plate Earthing(Main DB-1	Nos.	1.00		

Bill No.4: Electrical and Allied work					
S.N	Description of works	Unit	Qty	Rate	Amount
	<p>* Earthing with COPPER earth plate 600 mm x 600 mm x 6 mm thick including accessories, and providing masonry enclosure with cover plate having locking arrangement and watering pipe ect. (but without charcoal or coke and salt) complete as required.</p> <p>* 150mm thick alternate layers of Salt and Charcoal covering earth electrode completely.</p> <p>* Brazed jointing of earth electrode with earthing conductor including copper nut-bolts.</p> <p>* Providing of perforated 25mm. dia. GI watering pipe including earth excavation, refilling with compacted soil in layers of maximum 300mm. thickness all complete. The contractor should responsible to maintain earthing resistance less than 5 Ohm.</p> <p>* Supply and installation of SWG no 8 gauge bare copper conductor from Earthing Stations.</p>				
ii	Normal Earthing (UPS-1)	Nos.	1.00		
	<p>* Earthing with 2m long 12mm dia copper rod atleast 3.2m below ground levelwith 10SWG Bare CU conductor running from earth rod to earth test terminal box including accessories, allcomplete as required</p>				
10	Point wiring for hoding board	Pts.	1		
11	Manual Change Over Switch				
12	install of manual type change over switch 100amp/3pole and selector type (Mex, Havel/schlander)	Set	1		
Total					

NMB LAGHUBITTA BITTIYA SANSTHA LTD.
HEAD OFFICE, NEWROAD POKHARA
BILL OF QUANTITY (BOQ)

Bill No.5: CCTV & SECURITY SYSTEM					
S.N.	Description of works	Unit	Qty	Rate	Amount
1.00	CCTV CAMERA POINTS WIRING				
	Close circuit television points with RG 6, 75 Ohm CAT 6 cable and 23/60 twin flexible copper wires through in 20mm HDP pipe including MS box, junction box, pull box from DVR to Camera as per the drawings, site conditions, specification/schedule of finishess and instruction all complete.	Pts.	30.00		
2.00	NVR 32 Channel (4 SATA) WITH HDD				
	32 channel NVR System Supply, installation, testing and commissioning of Up to 8MP recording, 160Mbps Bit Rate Input Max (up to 16-ch IP video), Decoding:1-ch @ 4K or 4-ch @ 1080P, H.265/H.265+/H.264/H.264+, 4 SATA up to 6TB per HDD, 1 RJ 45 1000M, 1 HDMI up to 4K, standalone 1U 385 case(Metal) Connectable to smart IP cameras from Hikvision and the recording, playing back, and backing up of VCA alarms can be realized, VCA detection alarm is supported Brand : HIKVISION Model : DS-7616NI-Q4 2 nos- 6 TB hard disk for NVR (wd surveillance purple)	Set	1		
3.00	Security Camera				
i	2 MP Varifocal Bullet Network Camera				
	Supply, installation, testing and commissioning of High quality imaging with 2 MP resolution Efficient H.265+ compression technology Clear imaging even with strong back lighting with Digital WDR technology 1920x1080:25fps(P)/30fps(N), 2.8~8mm VF lens H.265+&H.265, IP67, DWDR, 3D DNR, BLC, IR range: up to 20m, DC12V & PoE, Support mobile monitoring via Hik-Connect , IP66, Full Metal*power supply no included. > Brand: HIKVISION > Model: DS-2CD1623G1-I 1/2.8" Progressive CMOS, ICR,	Set	0		
ii	2 MP Fixed Turret Network Camera				
	Supply, installation, testing and commissioning of High quality imaging with 2 MP resolution Efficient H.265+ compression technology Clear imaging against strong back light due to DWDR technology 1/2.8" Progressive CMOS, ICR, 1920x1080, 25fps(P)/30fps(N), 2.8mm/F2.0 lens, H.265/H.264+/H.264/MJPEG, IP67, DWDR, 3D DNR, BLC, IR range: up to 30m, DC12V & PoE, Support mobile monitoring via Hik-Connect *power supply no included > Brand : HIKVISION > Model : DS-2CD1323G0E-I	Nos	30		
4	16 Port POE Switch with 2 Uplink Port	Nos	2.00		
5	18.5"/19" LED Monitor (ACER/Dell/Lenovo/hikvision) with wireless mouse	Nos	1.00		
Total					

NMB LAGHUBITTA BITTIYA SANSTHA LTD.
HEAD OFFICE, NEWROAD POKHARA
BILL OF QUANTITY (BOQ)

Bill No.6: Networking works					
S.N.	Description of works	Unit	Qty	Rate	Amount
1.00	TELEPHONE POINTS WIRING				
	RJ 11 telephone socket including necessary GI connection box, 2 pair UTP cables drawn inside 16 mm dia PVC conduit with accessories (single run from TDF to Point w/o any joint in the middle of span) including the cost of Telephone Socket. Make: Cable :Pioneer/ Janata/ Prakash/ Orange, Outlet: Linkbasic	Pts.	60.00		
2.00	NETWORK POINTS WIRING				
	RJ-45 outlet including necessary GI connection box, CAT 6e + giga bit UTP cable drawn inside 16 mm dia PVC conduit (single run from Patch panel, hub, switch to Point w/o any joint in the middle of span) including the cost of RJ45 Socket	Pts.	70.00		
3.00	TELEPHONE MAIN CABLE WIRING				
	Supply the following PVC insulated CU telephone cable as concealed wiring through the false ceiling wall, table, whichever applicable in a table whichever applicable in a LISTIC/HDP pipes of sizes 25/32 mm dia including cable sockets cable clamps and necessary connecting ,fixing chiseling of existing wall/ceiling and redoing the chiseled area with cement and mortar as per the drawing site condition, specification and instruction all complete				
	5 pair telephone cable	Rnmtr.	50.00		
4.00	EPABX				
	Supply, installation, testing and commissioning and putting into operation with following 4 Trunk Line and 48x2 Extension port With Master Set :- Panasonic KXT-7730X 4 CO lines expandable upto 48x2 Flexible and Simple Expansion Date/Time/Extension Number/Co Line Number Dialled Number, Call Duration Warranty : 1 year Call Forwarding (Busy/Now Answer/Follow-Me/to Outside) Battery Interface Doorphone Panasonic PABX TES824	set	1.00		
5.00	9U network wall mount rack with 3X24 port networking patch panel				
	Supply, installation, testing and commissioning of 9U rack with fan designed to integrate wall-mounting, easy equipment access, and cable management in IT network. Supply and Installation of 24-ports, 9U rack mounted, High-impact, flame retardant,thermoplastic or Powder-coated steel, 22/24 AWG, CAT 6a RJ-45 patch panel for Data as per specification/schedule of finishes.	Set	1		
6.00	Telephone set (Panasonic)				
a	Panasonic KX-TSC62SXB Corded Telephone with color id	Set	48		
Total					

NMB LAGHUBITTA BITTIYA SANSTHA LTD.

HEAD OFFICE, NEWROAD POKHARA

BILL OF QUANTITY (BOQ)

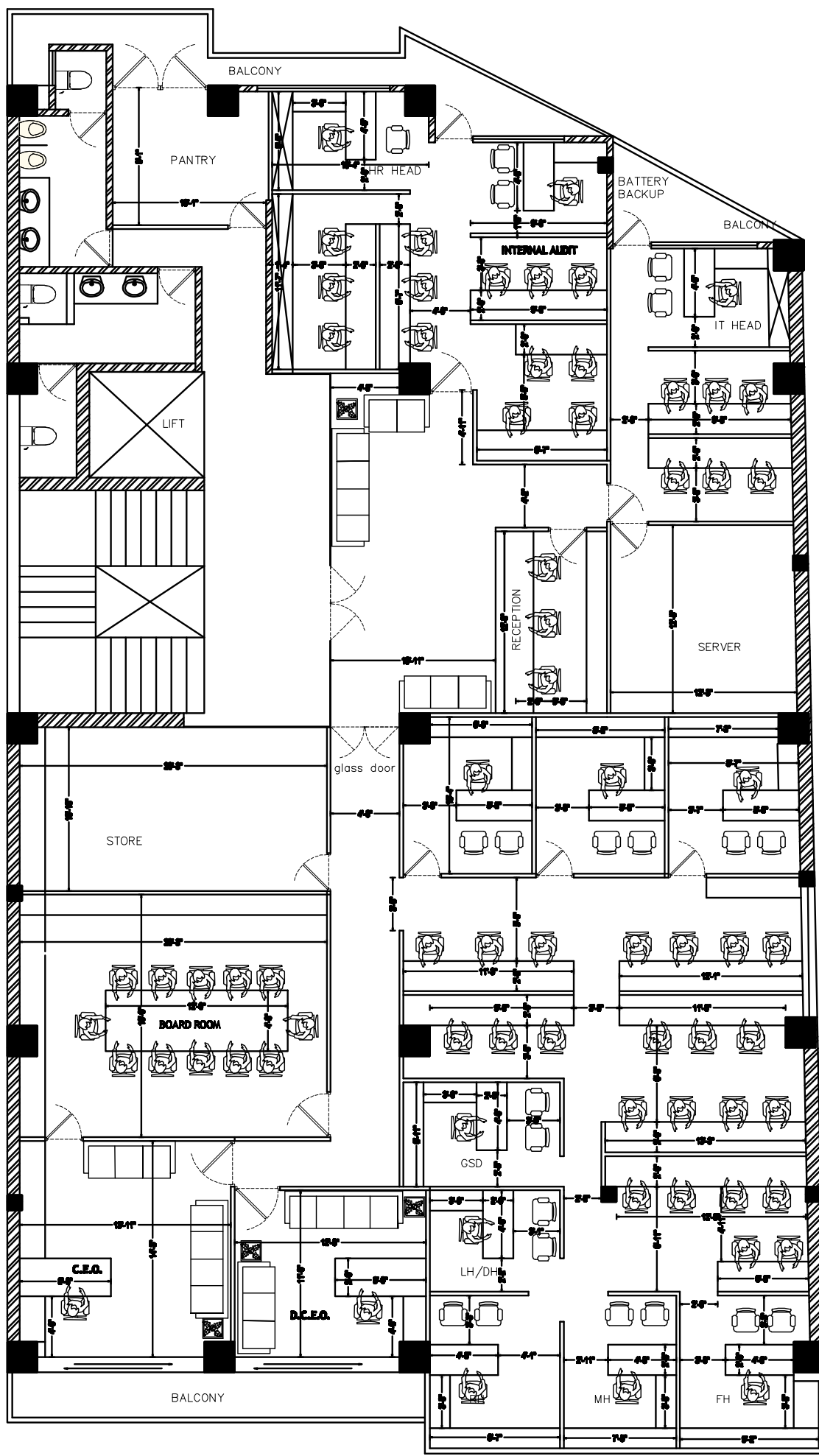
Bill No. 7: Plumbing & Sanitary Works.					
	Description of Works	Unit	Qty	Rate	Amount
1.0	WASTE, PIPES				
	Providing and fixing in position heavy quality PVC fittings or specials with or without door access as per need, joining pipes and fittings with rubber rings and solution etc. including nailing, clamping. Pipe line should lay disregarding groove cutting, hole cutting in brick work or RCC work and all complete as per drawing, specification, direction of Consultant and ready for operation.				
	a) 50mm dia. PVC fittings even or uneven section such as bend single or double junction. As per need and direction of the Consultant.	Rn.m	50		
2.0	COLD WATER LINES				
	Providing and fixing in position Chlorinated Poly Vinyl Chloride (CPVC) with necessary CPVC fittings such as elbow, tee, union, nipple, brass elbow and brass tee etc making joint with applying solvent yellow, including nailing, clamping. Pipe line should lay disregarding groove cutting and hole cutting all complete as per drawing specification, direction of the Consultant and ready for operation.	Rn.m	100		
3.0	ACCESSORIES				
i	WC/PAN SHEET				
	Providing and fixing in position water closet Active, seat height lev. at 17"-19" above finished floor "S" type white glazed with dual flush conseal cistern of 3/4.5 litre capacity with dual flush fitting , Heavy SS 3" screw with grip, slow falling Antimicrobial Seat, with angle valve with CP cap etc. accessories connection to soil pipe line and water line connections all complete as per drawing, specification, direction and ready for operation.	Nos.	0		
ii	WASH BASIN WITH TAP				
	Providing and fixing in position Countertop Basin size of 500x 450x 165 with 32mm dia. waste coupling with 1 nos. 32mm dia. bottle trap, 1nos. of Angular Stop Cock with CP cap, 1nos. of Pressmatic Piller Cock with 1nos. 450mm long connecting pipe , connection to waste line and water lines all complete as per drawing, specification, direction and ready for operation.	Nos.	0		
	Providing and fixing of following items:				
	a) Beveled edge glass mirror of float glass of Ashai in SS spacer of 25mm.	Nos	0		
	b) CP Towel Bar 24"	Nos	0		
	d)SS recess type toilet paper holder	Nos	0		
	e) SS Cockroach Trap 115 x 115	Nos	0		
	f) 160dia. PVC Floor Trap Gali	Nos	0		
	g) Soap Holder	Nos	1		
	h) Sink with Tap.	Nos	1		
4	maintenance and cleaning of Exsiting toilet	Job	0		
5.00	TILES FOR KITCHEN				

Bill No. 7: Plumbing & Sanitary Works.					
	Description of Works	Unit	Qty	Rate	Amount
i	Floor Tiles: Providing & laying 12" x 12" glazed vitrified plain ivory ceramic floor tiles of approved quality and colour over and including (1:2) cement (20 mm height screeding) sand mortar on floors in perfect line and level finished with necessary pointing with white cement in joints , including 3mm chipping of the surface all complete as per design and drawings and approval of the Consultant: .MAKE: SOMANY/NITCO	Sq.ft.	-		
ii	Wall Tiles: Providing & laying 12" x 18" glazed vitrified plain ivory ceramic floor tiles of approved quality and colour over and including (1:2) cement (20 mm height screeding)sand mortar on floors in perfect line and level finished with necessary pointing with white cement in joints , including 3mm chipping of the surface all complete as per design and drawings and approval of the Consultant: .MAKE: SOMANY/NITCO	Sq.ft.	30		
7.00	Supply and installation of Black ZET granite over the kitchen slab with 1:5 cement sand ratio including moulding finishing all complete as per instructions.	Sq.ft	45		
Total					

NMB LAGHUBITTA BITTIYA SANSTHA LTD.

BILL OF QUANTITY (BOQ)

Bill No.8:Air Conditioner Work					
S.N.	Particular	Unit	Qty	Rate	Amount
1	Heating, Ventilation, and Air Conditioning (HVAC work)				
	Supply, installation, testing and commissioning of HVAC work with below specification: All kind of support required for installation of HVAC equipment covered under the scope , shall be planned using GI slotted channel, bracket, angle brace, channel, connector, board plate , pipe ring saddle, channel end cap, clamping bow,beam clamp, hole base plate, wing nut, pipe ring etc as per instructed by Consultant. Equipment shall be supply with proper insulation, Anti vibration, spacers, support. Supply and laying of Chlorinated Poly Vinyl Chloride (CPVC) with necessary CPVC fittings such as elbow, tee, union, nipple, brass elbow and brass tee etc making joint with applying solvent yellow, including nailing, clamping for Plumbing work to manage Drainage of all AC to bathroom/out parts and provide metal angle to adjust the outdoor if needed.				
1	Ceiling Cassette Air Conditioner 2 TON	Nos	8		
2	Ceiling Cassette Air Conditioner 1.5 TON	Nos	2		
3	Ceiling Cassette Air Conditioner 1 TON	Nos	-		
4	Wall mounted type Split AC Air Conditioner 2 TON	Nos			
5	Wall mounted type Split AC Air Conditioner 1.5 TON	Nos			
6	Wall mounted type Split AC Air Conditioner 1 TON	Nos	1		
7	Wall mounted type Split AC Air Conditioner 0.75 TON	Nos	-		
8	Provide and install High quality Copper pipes as per design and instruction by Engineer	Rft	1100		
Total					



CLIENT:
 NMB MICROFINANCE LTD.
 HEAD OFFICE, POKHARA.

SCALE:
 SECOND FLOOR PLAN (4886 sq.ft.)
 FURNITURE LAYOUT

DESIGN:
 FITSOH Engineering Service Pvt Ltd
 Pokhara Metropolitan City,
 Nepal Darjeeling

DESIGNED BY:
 J.A.C. Paudyal
DATE:
 21.08.2019

APPROVED BY: